

# Standard Portable Cylinders User Guide



# Contents

Getting to Know the Parts of Your Portable Cylinder **3**

Getting to Know Your Portable Cylinder **4**

How to Use Your Cylinder **5**

Reordering **6**

Storing Your Cylinders **6**

How Do I Carry My Portable Cylinder? **7**

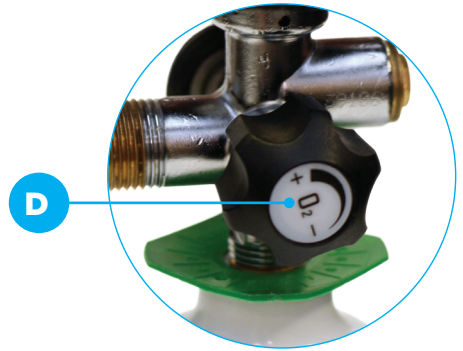
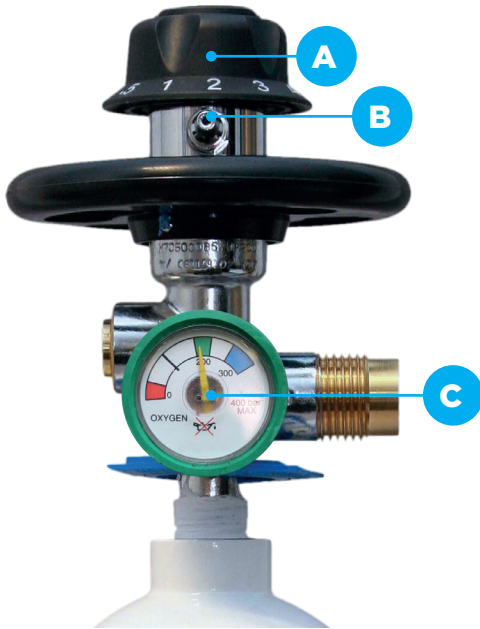
Troubleshooting **7**



**ENHANCING  
LIVES**

# Getting to Know the Parts of Your Cylinder

Freedom® 400



- A** Flow rate selector
- B** Outlet connector
- C** Contents gauge
- D** On/Off valve

## Caution

The cylinder is full when the contents gauge points to the green section.

The appearance of your gauge may vary.

(open 24 hours, 7 days a week for urgent calls)

# Getting to Know Your Cylinder

Portable cylinders are designed to allow you to move around freely. The cylinder you will be provided with, will depend on the flow rate you have been ordered.

The Healthcare Technician will show you how to set the cylinder to your ordered flow rate.

Any changes to this setting should only be made if requested by your Healthcare Professional.

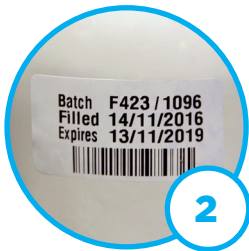
## Freedom® 400 cylinder duration

Flow rate (lpm)	Approximate duration
0.1	70 hours 50 mins
0.2	35 hours 25 mins
0.5	14 hours 10 mins
1	7 hours 5 mins
2	3 hours 30 mins
3	2 hours 20 mins
4	1 hour 45 mins
5	1 hour 25 mins
6	1 hour 10 mins
8	50 mins
10	40 mins
12	35 mins
15	25 mins

# How to Use Your Cylinder



Check the contents gauge to see how much oxygen remains. If the gauge is showing red, your cylinder is empty and needs to be changed immediately.



Check the expiry date has not passed.

**When setting up the cylinder for use, face it away from your body before turning it on**



Attach the oxygen tube to the connector or flow meter.

**Your cylinder can be laid flat when being used**



If your cylinder has a side valve, turn a quarter turn towards the + or on position to allow oxygen to flow.



Set the flow rate on the flow selector by turning the dial to the number your Healthcare Professional has advised you to use, this should be clearly displayed in the window.

# How to Order Cylinders

If you need a refill of oxygen cylinders please call us on **0800 373580**, 8.00am-6.30pm every day.

You can also reorder cylinders via our website. Go to **www.baywater.co.uk**, click the link and follow the instructions given.

Portable cylinder refills cannot be ordered for same day delivery so you will need to ensure that you order before your cylinder is empty.

Please note: Your portable cylinder remains the property of Baywater Healthcare and is on loan to the NHS

## Storing Your Cylinders

Cylinders must be stored in a dry area, away from anything that displays the flammable logo on packaging, or contains the ingredient oil.



Avoid storing cylinders in an area that can get frosty. Frost can lead to the valve of the cylinder becoming frozen. This would stop your cylinder from working. Cylinders should be stored at room temperature, they need to be brought inside when our Healthcare Technician has delivered them to your home. Please do not keep cylinders outside for long periods of time.

If stored in a cold location, the needle on the contents gauge could go down. This will return to its normal position once the cylinder has reached room temperature.

# How Do I Carry My Cylinder?

You will be provided with a cylinder carry bag to store and carry your cylinder. Make sure one of the handles on the bag is used to carry the cylinder. Your Healthcare Technician will show you how to use this when you have your equipment installed.

Your portable cylinders should always be carried and used in the carry bag provided by Baywater Healthcare.

## Troubleshooting

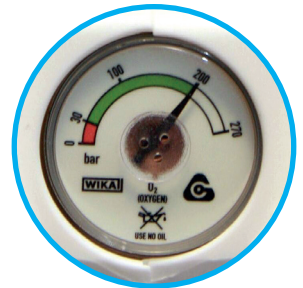
### If you are experiencing no or limited flow



Check the cylinder is switched on properly and set to the correct flow rate



Check nasal prong tubing for kinks, splits or blockages



Check the contents gauge to ensure the cylinder is not empty

**If the problem persists please call us on 0800 373580.**

(open 24 hours, 7 days a week for urgent calls)



For more information please contact:

**Baywater Healthcare**

Wulvern House

Electra Way

Crewe

Cheshire

CW1 6GW

Call:0800 373580

 [healthuk@baywater.co.uk](mailto:healthuk@baywater.co.uk)

 @BaywaterHealth

 Baywater Healthcare

 Baywater Healthcare



Mae'r daflen hon ar Gael yn Gymraeg

**ENHANCING  
LIVES**

16/296/UK-AUG24 v6